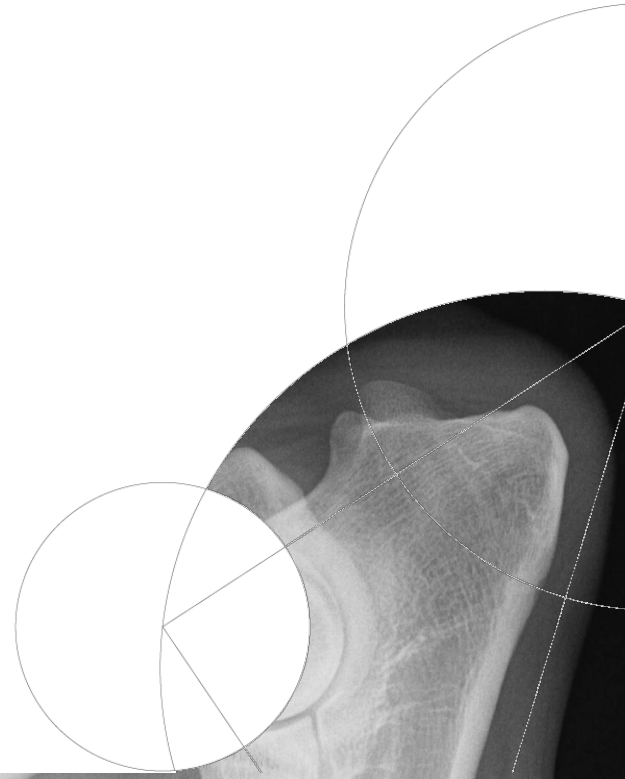




AD-bekæmpelsesprogram



Albueledsdysplasi

Multifaktoriel

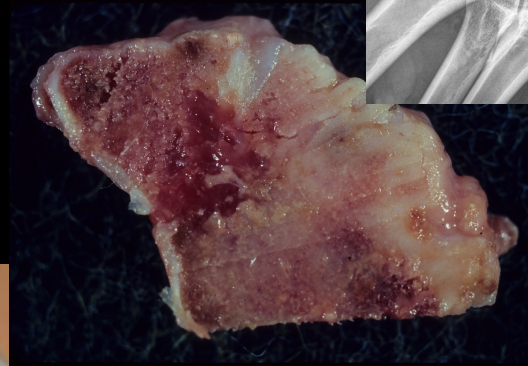
Arv

Polygenetisk

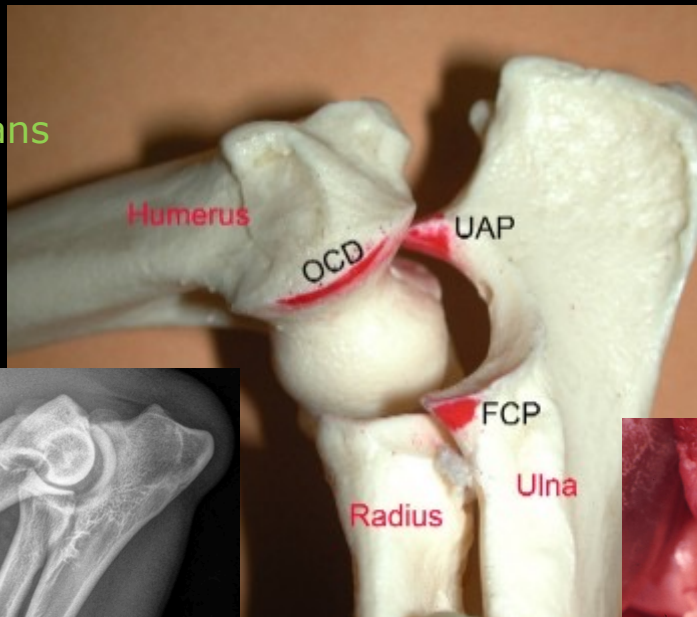
Miljøpåvirkning

Væksthastighed, fodring, motion

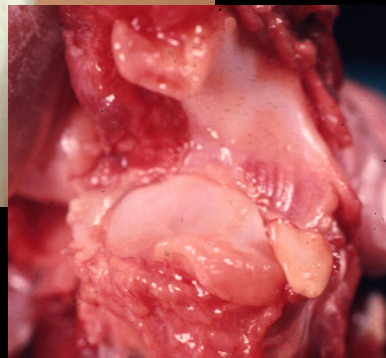
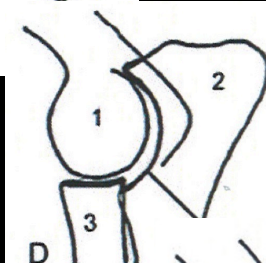
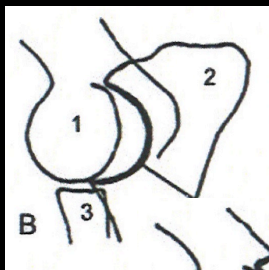
Albueledsdysplasi



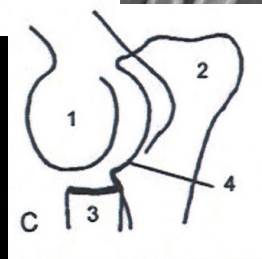
Osteochondritis dissecans (OCD)



Ununited anconeal process (UAP)



Inkongruens



Fragmented coronoid process (FCP)

Albueledsartrose



- sekundære forandringer til albueledsdysplasi

Forskellig målsætning

Den halte hund

- Udredning
- Den enkelte hund
- Ofte flere projektioner
- Klinikerer bestemmer

Bekæmpelsesprogram

- Udvalgelse af avlsdyr
- Racen
- Fastsatte projektioner
AD (IEWG)

AD-procedure

IEWG protokollen (Verona 2017)
(International Elbow Working Group)

Forudsætninger for bedømmelse
Teknisk kvalitet
Evaluering/klassificering

Forudsætninger for bedømmelse

Hundens alder

Identitet

Permanent mærkning af røntgenoptagelserne

Ejers underskrift

Dyrlæges underskrift

Omfotografering

Korrekt udfyldt rekvisition

Teknisk kvalitet

Billedkvalitet



Positionering

Én lateral optagelse af hvert albueled flekteret 45 - 60°
De to kondyldele skal være projiceret ovenpå hinanden

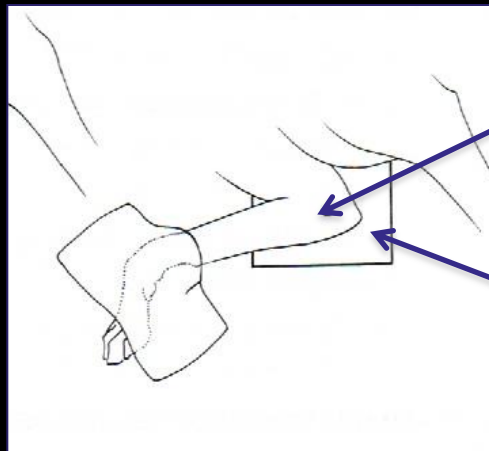
Positionering/centrering/indblænding



Positionering M-L



As the medial part of the condyle is larger than the lateral, a foam block is necessary under the humerus



Centrering: På den mediale epicondyl

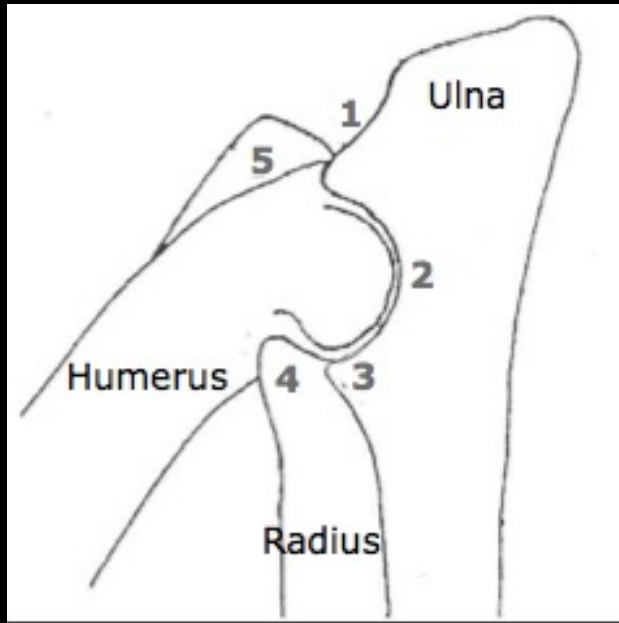
Indblænding



M-L

The elbow findings are scored according to the severity of the osteoarthritis (DJD) and/or the presence of a primary lesion

Radiografisk anatomi



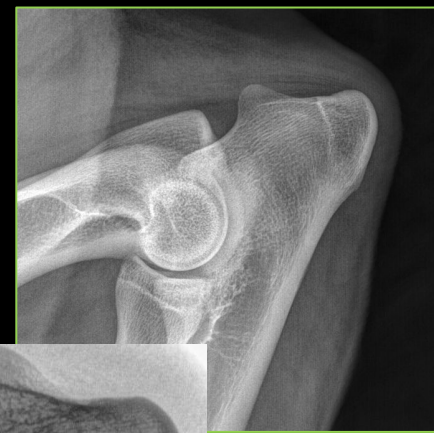
- 1) Proc. anconeus
- 2) Ulna trochlear notch
- 3) Proc. coronoideus medialis
- 4) Caput radii
- 5) Laterale epicondyl

Grad 0 Normal elbow joint



No evidence of incongruity, sclerosis or osteoarthritis

Grade 1 Mild osteoarthritis



Presence of osteophytes < 2 mm, sclerosis of the base of the coronoid processes, trabecular pattern still visible

Grade 2 Moderat osteoarthritis or suspect primary leson



Presence of osteophytes 2 – 5 mm

Obvious sclerosis (no trabecular pattern) of the base of the coronoid processes

Step of 3-5 mm between radius and ulna (INCONGRUITY)

Indirect signs for other primary lesion (UAP, FCP/Coronoid disease, OCD)

Grade 3 Severe osteoarthritis or evident primary lesion



FCP

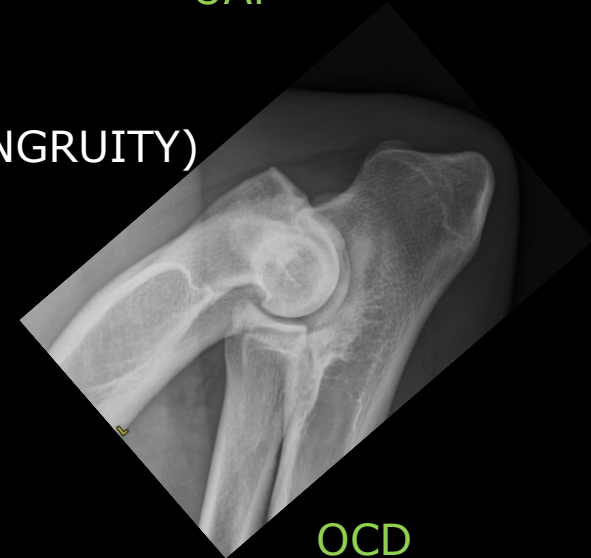


Incongruity



UAP

Presence of osteophytes > 5 mm
Step of > 5 mm between radius and ulna (obvious INCONGRUITY)
Obvious presence of a primary lesion (UAP, FCP, OCD)



OCD

